



Romney House, Westminster  
London SW1P

GARTON JONES.COM



# Romney House, Westminster London, SW1P

GARTON JONES.COM

49 Marsham Street Sales +44 (0) 20 7340 0480  
London westminster@gartonjones.com  
SW1P 3DP www.gartonjones.com

## £825,000 Leasehold

We are pleased offer for sale this 2 bedroom apartment located in this popular development close to the River Thames. The living space comprises of an open plan integrated kitchen and reception room with views into the pretty communal gardens, there are two good size double bedrooms both with fitted wardrobes and the master benefitting from an en-suite bathroom. There is a further guest bathroom, ample storage and video entry system. Residents of Romney House benefit from a 24 hour concierge and a gymnasium. Marsham Street is extremely convenient for access to many of the renowned local landmarks which include the Houses of Parliament and Westminster Abbey. The local transport links of Victoria Station is nearby providing mainline UK services including the Gatwick Express as well as the underground services of Victoria, Pimlico, St James Park and Westminster. The area has an abundance of amenities and restaurants such as The Vincent Rooms, The Cinnamon Club, the Ivy Bar and Grill and Yaatra based in the Old Westminster Fire Station. You are just a short walk away from the Chelsea College of Arts and St Johns Smith Square Concert Halls offering a variety of classical musical performances. Garton Jones are based on site so are readily available for viewings.

Service Charges: £7264 Per Annum (Including a sinking fund contribution)

Ground Rent: £350 Per Annum

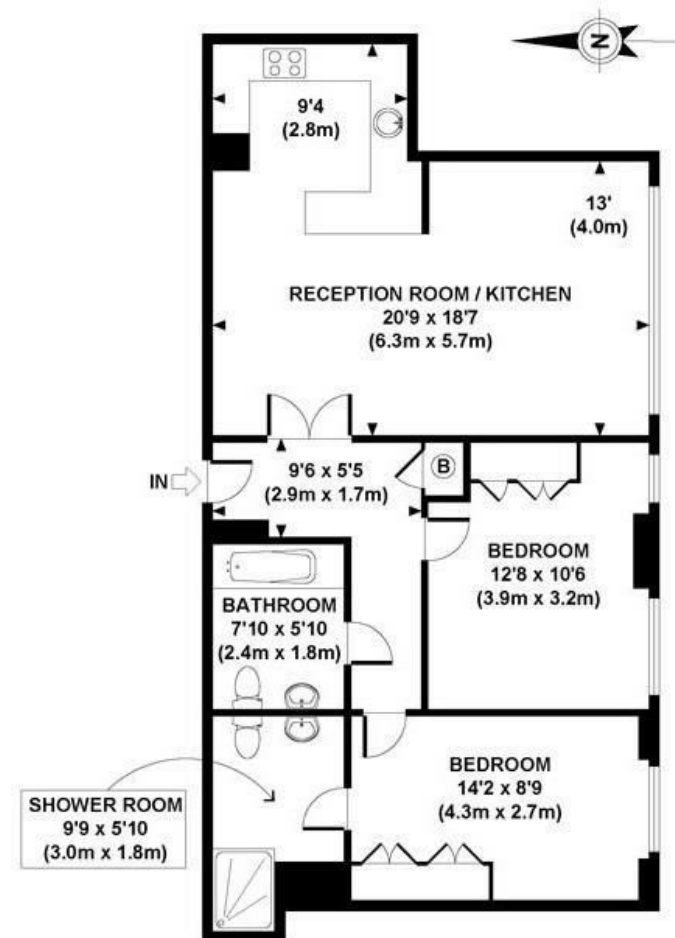
Long Leasehold: 982 Years Remaining

Council Tax Band F (London Borough of Westminster)

- 2 Bedroom Apartment
- 1st Floor (Lift)
- Reception Room
- Open Plan Integrated Kitchen
- 2 Bathrooms (En-Suite)
- Sold with Vacant Possession
- 24 Hour Concierge & Residents Gym
- Close To Local Shops & Restaurants
- Walking Distance To St James's Park, Westminster & Victoria Transport Links



EPC certificate available on request.



FIRST FLOOR  
GROSS INTERNAL  
FLOOR AREA 784 SQ FT

APPROX. GROSS INTERNAL FLOOR AREA 784 SQ FT / 73 SQ M



